



Nr.1 X2I15118893

Period Analysed: Thursday 31 March 2016 to Tuesday 04 October 2016



GPS coordinates not filled-in.
You can enter GPS coordinates in
the counter's Eco-Visio file.

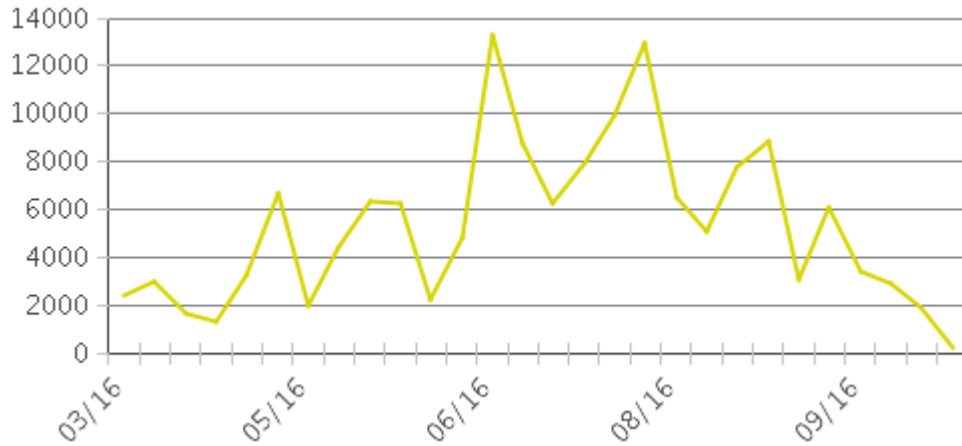


No picture available.
You can add a picture to the counter's Eco-Visio file.

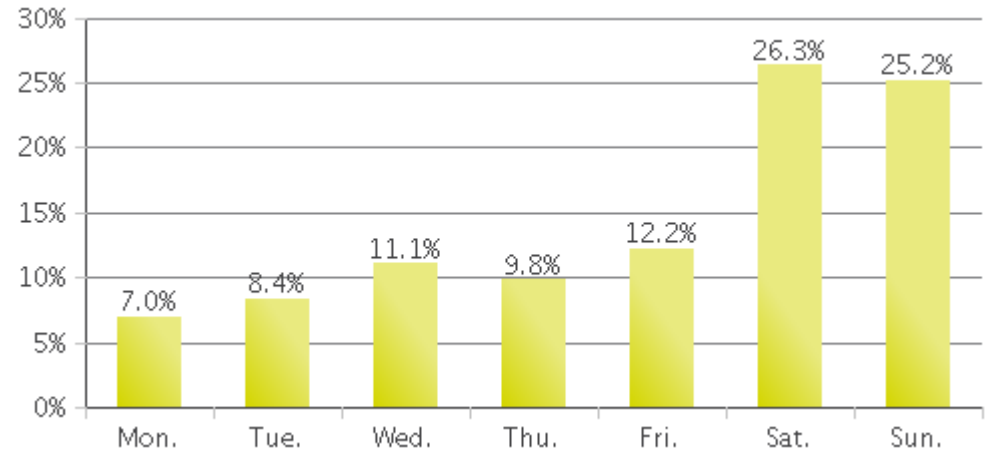
Key Figures

- Total Traffic for the Period Analysed: 149,446
- Daily Average: 795
 - Weekdays: 538 / Weekend days: 1,432
 - Max. Average Value (July): 1,364
 - Min. Average Value (March): 3
- Busiest Day of the Week: Saturday
- Busiest Days of the Period Analysed:
 1. Saturday 25 June 2016 (3,963)
 2. Saturday 02 July 2016 (3,179)
 3. Friday 24 June 2016 (3,170)

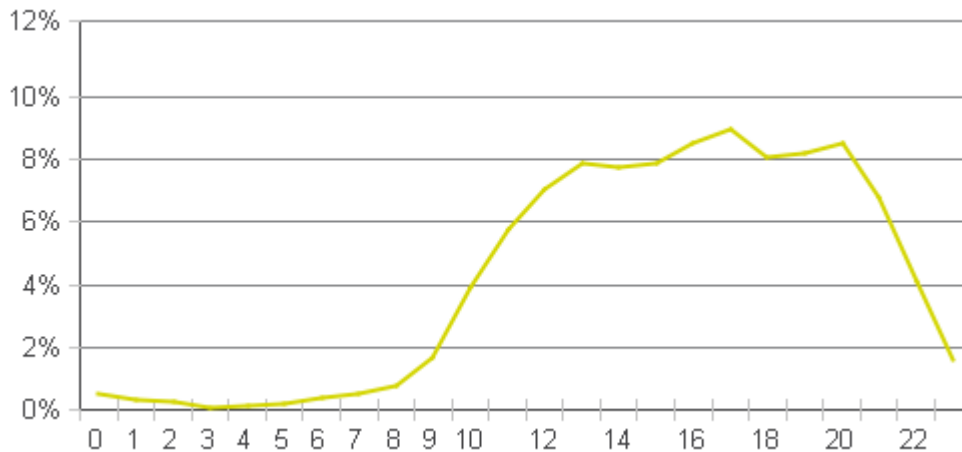
Weekly Traffic



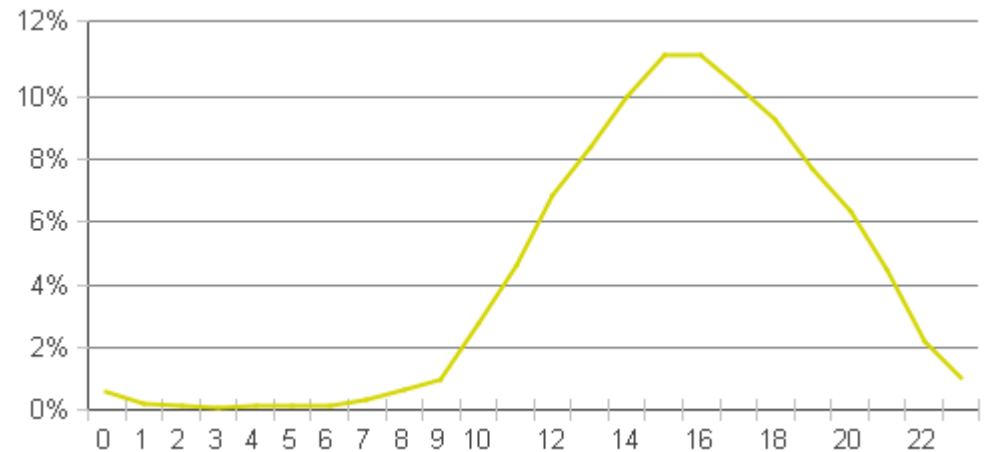
Weekly Profile



Hourly Profile during Weekdays



Hourly Profile during the Weekend



Nr.1 X2I15118893

Period Analysed: Thursday 31 March 2016 to Tuesday 04 October 2016



GPS coordinates not filled-in.
You can enter GPS coordinates in
the counter's Eco-Visio file.

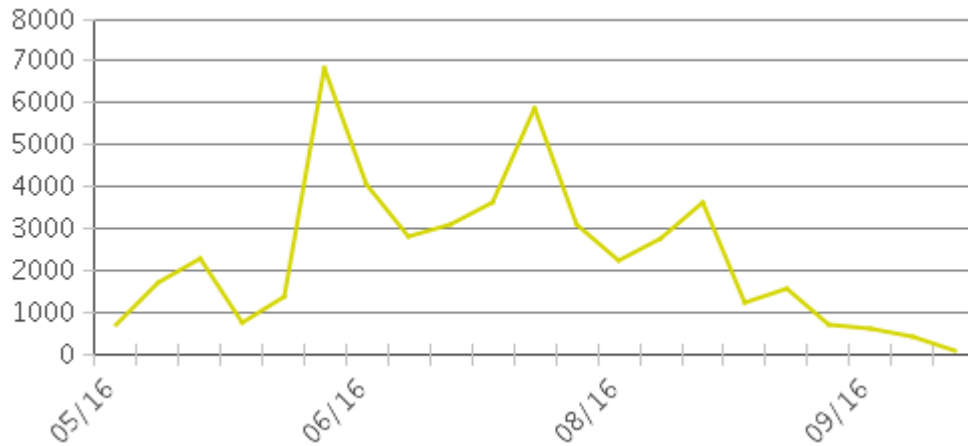


No picture available.
You can add a picture to the counter's Eco-Visio file.

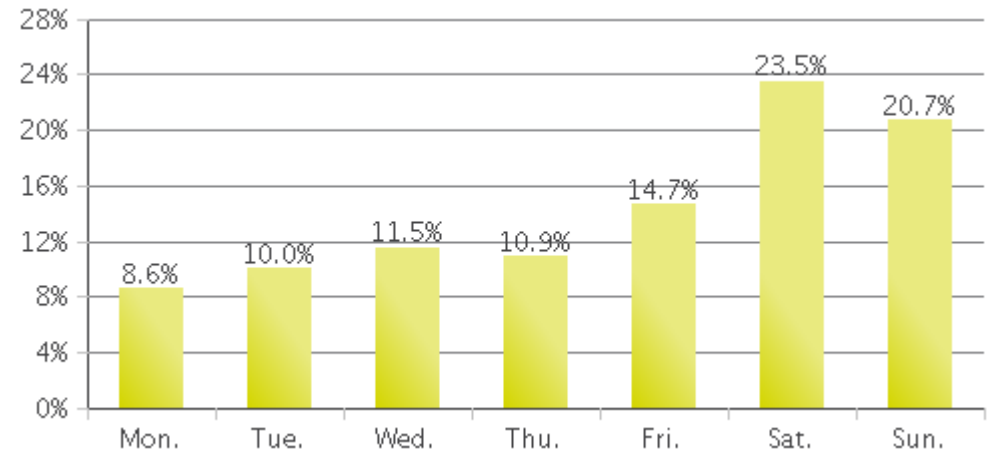
Key Figures

- Total Traffic for the Period Analysed: 49,636
- Daily Average: 360
 - Weekdays: 280 / Weekend days: 556
 - Max. Average Value (July): 578
 - Min. Average Value (October): 62
- Busiest Day of the Week: Saturday
- Busiest Days of the Period Analysed:
 1. Saturday 25 June 2016 (2,022)
 2. Friday 24 June 2016 (1,735)

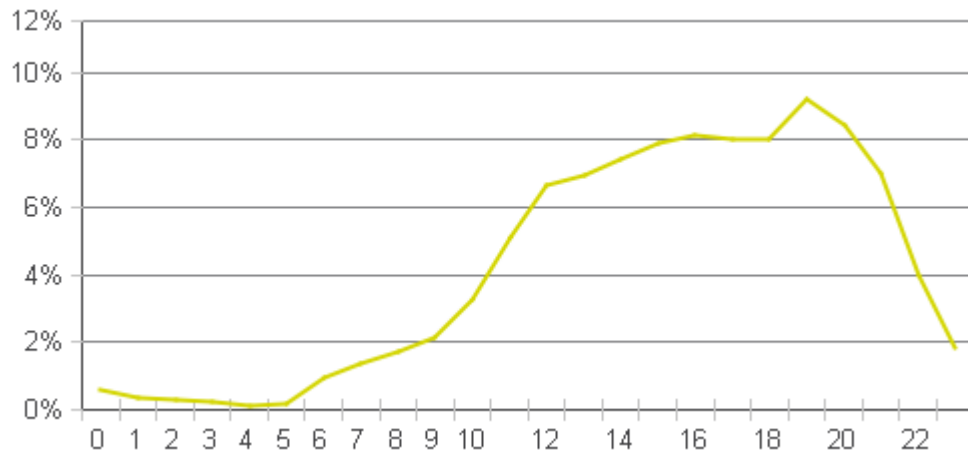
Weekly Traffic



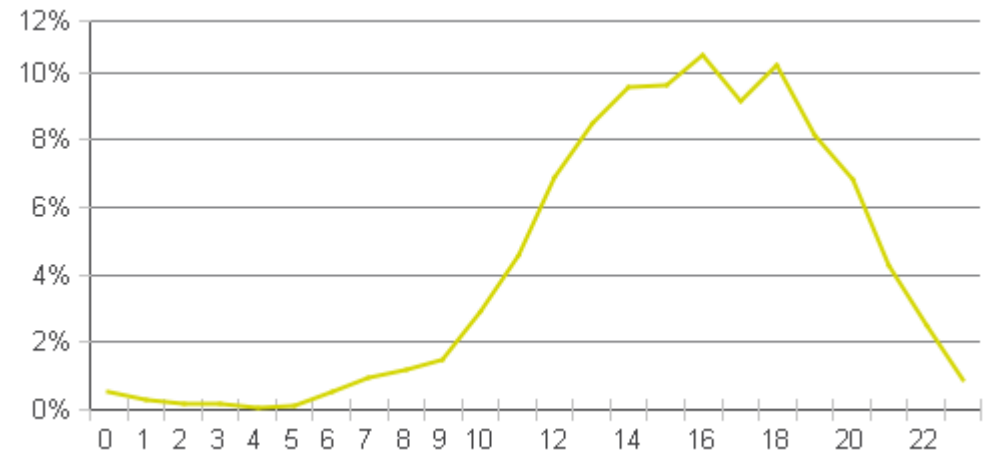
Weekly Profile



Hourly Profile during Weekdays



Hourly Profile during the Weekend



Nr.2 X2I15118894

Period Analysed: Friday 20 May 2016 to Tuesday 04 October 2016



GPS coordinates not filled-in.
You can enter GPS coordinates in
the counter's Eco-Visio file.

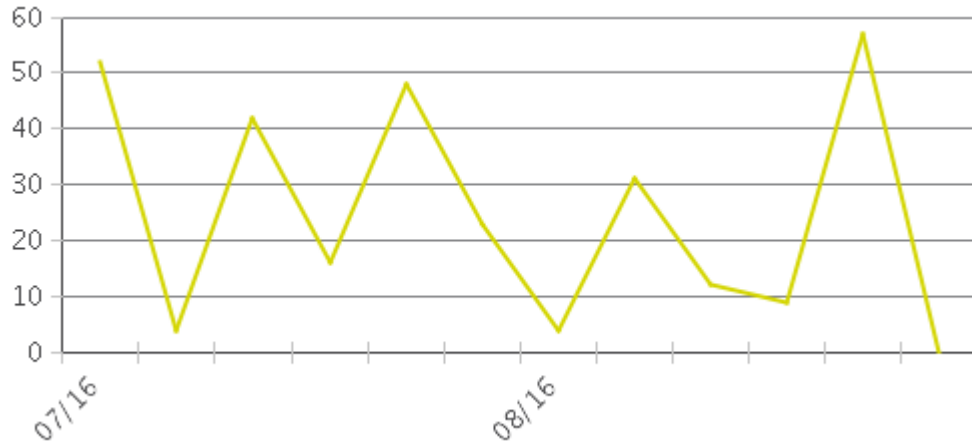


No picture available.
You can add a picture to the counter's Eco-Visio file.

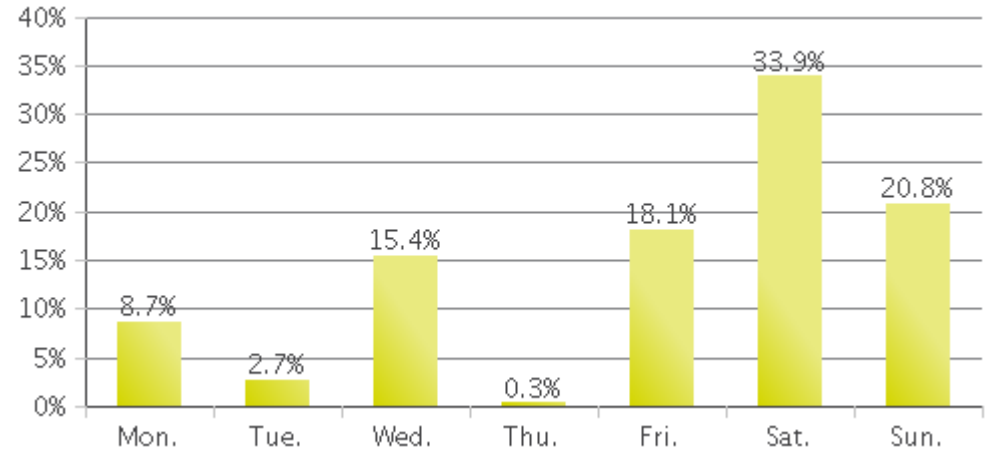
Key Figures

- Total Traffic for the Period Analysed: 298
- Daily Average: 4
 - Weekdays: 2 / Weekend days: 7
 - Max. Average Value (October): 14
 - Min. Average Value (September): 2
- Busiest Day of the Week: Saturday
- Busiest Days of the Period Analysed:
 1. Saturday 01 October 2016 (52)
 2. Sunday 21 August 2016 (29)
 3. Wednesday 20 July 2016 (28)

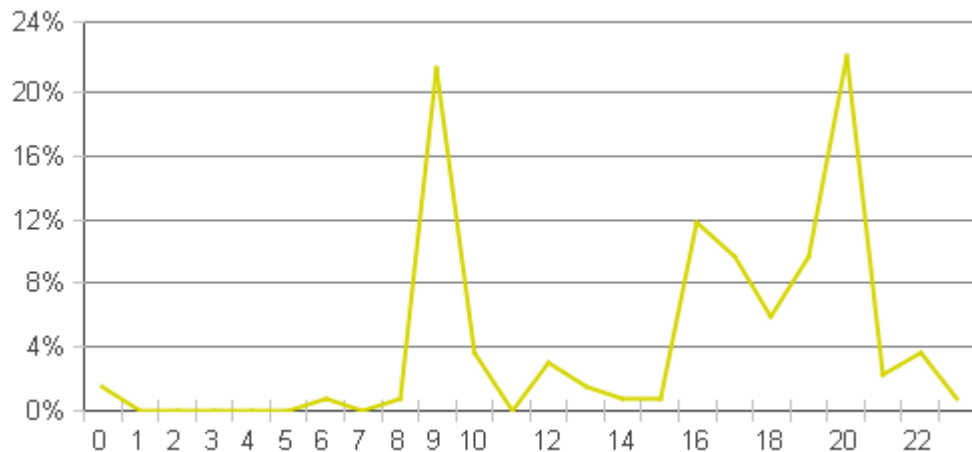
Weekly Traffic



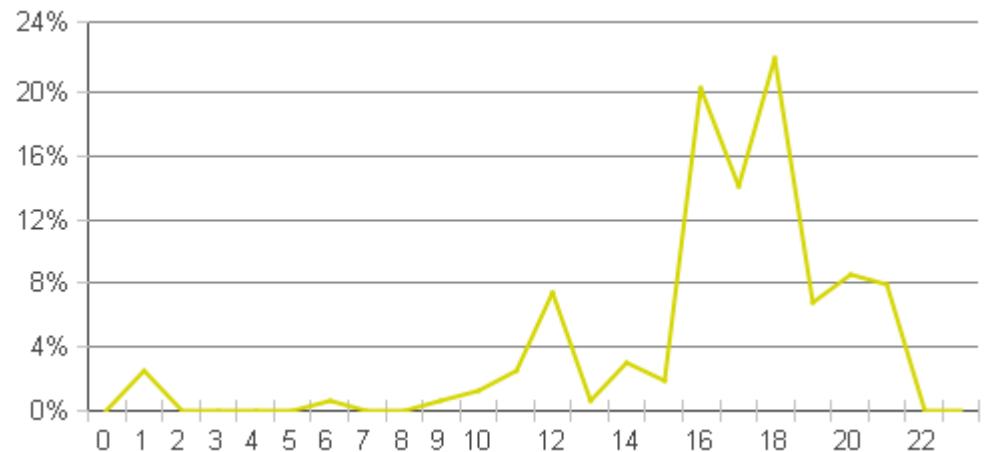
Weekly Profile



Hourly Profile during Weekdays



Hourly Profile during the Weekend



Nr.3 X2I15118895

Period Analysed: Wednesday 20 July 2016 to Tuesday 04 October 2016

